

Phospho-AKT1/AKT2/AKT3 (T308) Antibody



PACO06092

Product Information

Size:

50ug

Reactivity:

Human, Mouse, Rat, Monkey

Source:

Rabbit

Isotype:

IgG

Applications:

ELISA, WB, IHC

Recommended dilutions:

ELISA:1:10000, WB:1:500-1:2000,
IHC:1:100-1:300

Protein Background:**Gene ID:**

AKT1/AKT2/AKT3

Uniprot

P31749/P31751/Q9Y243

Synonyms:

AKT1; PKB; RAC; RAC-alpha serine/threonine-protein kinase; Protein kinase B; PKB; Protein kinase B alpha; PKB alpha; Proto-oncogene c-Akt; RAC-PK-alpha; AKT2; RAC-beta serine/threonine-protein kinase; Protein kinase Akt-2; Protein kinase B

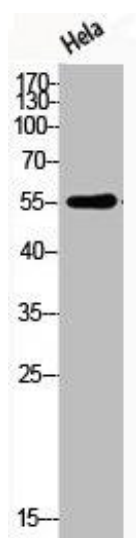
Immunogen:

Synthesized peptide derived from human Akt around the phosphorylation site of T308.

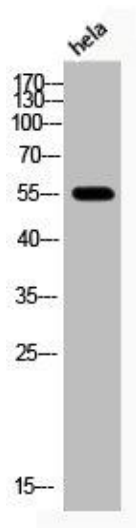
Storage:

Liquid in PBS containing 50% glycerol, 0.5% BSA and 0.02% sodium azide.

Product Images



Western Blot analysis of HELA cells using Phospho-Akt (T308) Polyclonal Antibody.



Western Blot analysis of hela cells using Phospho-Akt (T308) Polyclonal Antibody.