

# Acetyl-E2F4 (K96) Antibody



PACO06057

---

## Product Information

**Size:**

50ug

**Reactivity:**

Human, Mouse, Rat

**Source:**

Rabbit

**Isotype:**

IgG

**Applications:**

ELISA, WB

**Recommended dilutions:**

ELISA:1:20000, WB:1:500-1:2000

**Protein Background:****Gene ID:**

E2F4

**Uniprot**

Q16254

**Synonyms:**

E2F4; Transcription factor E2F4; E2F-4

**Immunogen:**

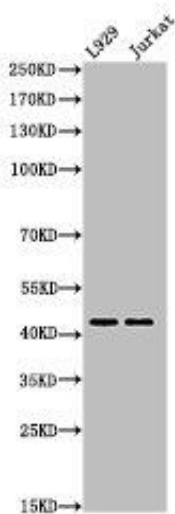
Synthesized peptide derived from the human E2F-4 around the acetylation site of K96.

**Storage:**

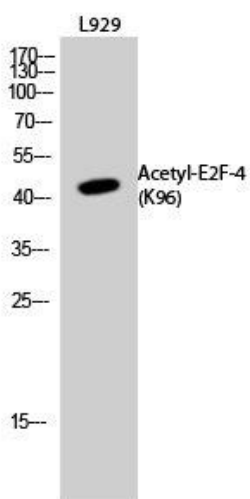
Liquid in PBS containing 50% glycerol, 0.5% BSA and 0.02% sodium azide.

## Product Images

---



Western Blot analysis of L929Jurkat cells using Acetyl-E2F-4 (K96) Polyclonal Antibody.



Western Blot analysis of L929 cells using Acetyl-E2F-4 (K96) Polyclonal Antibody.