

Acetyl-APEX1 (K7) Antibody



PACO06055

Product Information

Size:

50ug

Reactivity:

Human

Source:

Rabbit

Isotype:

IgG

Applications:

ELISA, WB

Recommended dilutions:

ELISA:1:20000, WB:1:500-1:2000

Protein Background:

Gene ID:

APEX1

Uniprot

P27695

Synonyms:

APEX1; APE; APE1; APEX; APX; HAP1; REF1; DNA-(apurinic or apyrimidinic site) lyase; APEX nuclease; APEN; Apurinic-apyrimidinic endonuclease 1; AP endonuclease 1; APE-1; REF-1; Redox factor-1

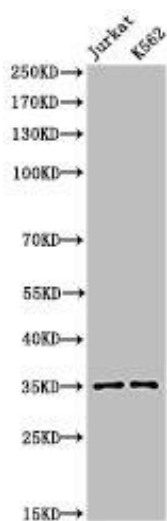
Immunogen:

Synthesized peptide derived from the human Ref-1 around the acetylation site of K7.

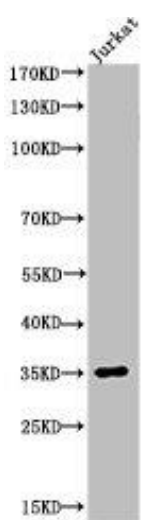
Storage:

Liquid in PBS containing 50% glycerol, 0.5% BSA and 0.02% sodium azide.

Product Images



Western Blot analysis of Jurkat, K562 cells using Acetyl-Ref-1 (K7) Polyclonal Antibody.



Western Blot analysis of JK cells using Acetyl-Ref-1 (K7) Polyclonal Antibody.