

Cleaved-CASP9 (D315) Antibody



PACO06033

Product Information

Size:

50ug

Reactivity:

Human

Source:

Rabbit

Isotype:

IgG

Applications:

ELISA, WB, IHC, IF

Recommended dilutions:

ELISA:1:10000, WB:1:500-1:2000,
IHC:1:100-1:300, IF:1:200-1:1000

Protein Background:**Gene ID:**

CASP9

Uniprot

P55211

Synonyms:

CASP9; MCH6; Caspase-9; CASP-9; Apoptotic protease Mch-6; Apoptotic protease-activating factor 3; APAF-3; ICE-like apoptotic protease 6; ICE-LAP6

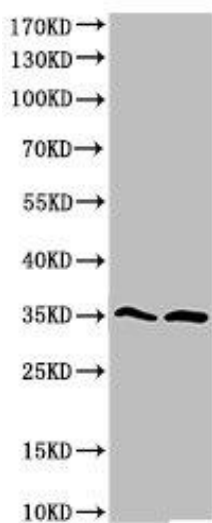
Immunogen:

Synthesized peptide derived from the Internal region of human Caspase-9 p35.

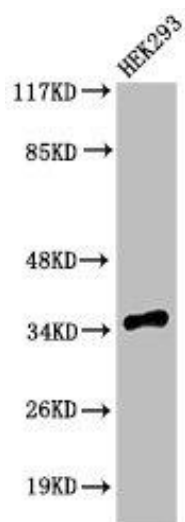
Storage:

Liquid in PBS containing 50% glycerol, 0.5% BSA and 0.02% sodium azide.

Product Images



Western Blot analysis of VEC A549 cells using Cleaved-Caspase-9 p35 (D315) Polyclonal Antibody.



Western Blot analysis of 293 cells using Cleaved-Caspase-9 p35 (D315) Polyclonal Antibody.