

# SLC4A8/SLC4A10 Antibody



PACO03035

---

## Product Information

**Size:**

50ug

**Reactivity:**

Human, Mouse, Rat

**Source:**

Rabbit

**Isotype:**

IgG

**Applications:**

ELISA, WB, IHC

**Recommended dilutions:**

WB:1:500-1:2000, IHC:1:100-1:300

**Protein Background:****Gene ID:**

SLC4A8/SLC4A10

**Uniprot**

Q2Y0W8/Q6U841

**Synonyms:**

SLC4A8; KIAA0739; NBC; NBC3; NDCBE1; Electroneutral sodium bicarbonate exchanger 1; Electroneutral Na(+)-driven Cl-HCO<sub>3</sub> exchanger; Solute carrier family 4 member 8; k-NBC3; SLC4A10; NCBE; Sodium-driven chloride bicarbonate exchanger; Solute

**Immunogen:**

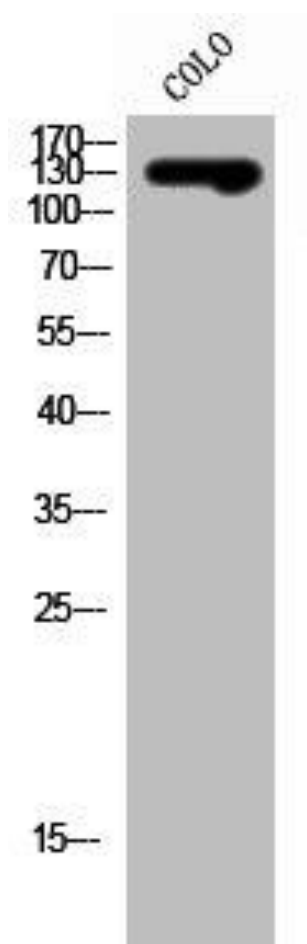
Synthesized peptide derived from the Internal region of human SLC4A8/10.

**Storage:**

Liquid in PBS containing 50% glycerol, 0.5% BSA and 0.02% sodium azide.

## Product Images

---



Western Blot analysis of COLO cells using SLC4A8/10 Polyclonal Antibody.