

# SPDL1 Antibody



PACO02989

---

## Product Information

**Size:**

50ug

**Reactivity:**

Human

**Source:**

Rabbit

**Isotype:**

IgG

**Applications:**

ELISA, WB

**Recommended dilutions:**

WB:1:500-1:2000

**Protein Background:****Gene ID:**

SPDL1

**Uniprot**

Q96EA4

**Synonyms:**

CCDC99; Protein Spindly; hSpindly; Arsenite-related gene 1 protein; Coiled-coil domain-containing protein 99; Rhabdomyosarcoma antigen MU-RMS-40.4A

**Immunogen:**

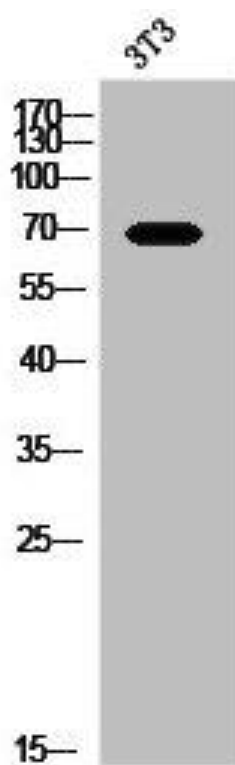
Synthesized peptide derived from the C-terminal region of human CCDC99.

**Storage:**

Liquid in PBS containing 50% glycerol, 0.5% BSA and 0.02% sodium azide.

## Product Images

---



Western Blot analysis of 3T3 cells using CCDC99 Polyclonal Antibody.