

# NDUFS3 Antibody



PACO02925

---

## Product Information

**Size:**

50ug

**Reactivity:**

Human, Mouse

**Source:**

Rabbit

**Isotype:**

IgG

**Applications:**

ELISA, WB

**Recommended dilutions:**

WB:1:500-1:2000

**Protein Background:**

**Gene ID:**

NDUFS3

**Uniprot**

O75489

**Synonyms:**

NDUFS3; NADH dehydrogenase [ubiquinone] iron-sulfur protein 3; mitochondrial; Complex I-30kD; CI-30kD; NADH-ubiquinone oxidoreductase 30 kDa subunit

**Immunogen:**

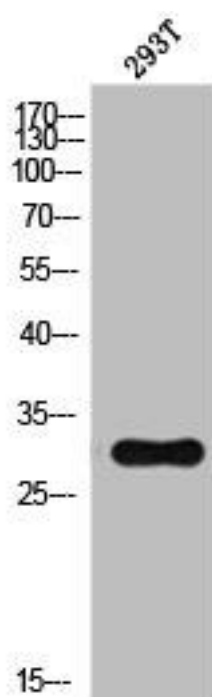
Synthesized peptide derived from the Internal region of human NDUFS3.

**Storage:**

Liquid in PBS containing 50% glycerol, 0.5% BSA and 0.02% sodium azide.

## Product Images

---



Western Blot analysis of 293T cells using NDUFS3 Polyclonal Antibody.