

# OR13G1 Antibody



PACO02911

---

## Product Information

**Size:**

50ug

**Reactivity:**

Human

**Source:**

Rabbit

**Isotype:**

IgG

**Applications:**

ELISA, WB

**Recommended dilutions:**

WB:1:500-1:2000

**Protein Background:**

**Gene ID:**

OR13G1

**Uniprot**

Q8NGZ3

**Synonyms:**

OR13G1; Olfactory receptor 13G1; Olfactory receptor OR1-37

**Immunogen:**

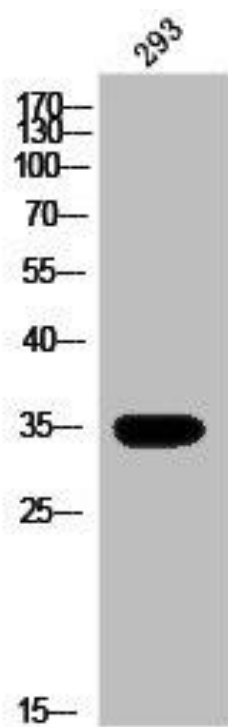
Synthesized peptide derived from the C-terminal region of human Olfactory receptor 13G1.

**Storage:**

Liquid in PBS containing 50% glycerol, 0.5% BSA and 0.02% sodium azide.

## Product Images

---



Western Blot analysis of 293 cells using Olfactory receptor 13G1 Polyclonal Antibody.