

# LY75 Antibody



PACO02884

---

## Product Information

**Size:**

50ug

**Reactivity:**

Human

**Source:**

Rabbit

**Isotype:**

IgG

**Applications:**

ELISA, WB

**Recommended dilutions:**

WB:1:500-1:2000

**Protein Background:****Gene ID:**

LY75

**Uniprot**

O60449

**Synonyms:**

LY75; CD205; CLEC13B; Lymphocyte antigen 75; Ly-75; C-type lectin domain family 13 member B; DEC-205; gp200-MR6; CD antigen CD205

**Immunogen:**

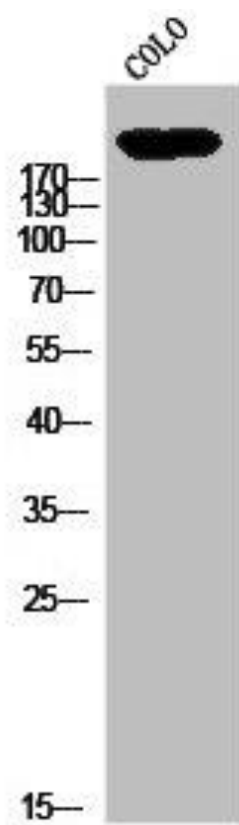
Synthesized peptide derived from the Internal region of human CD205.

**Storage:**

Liquid in PBS containing 50% glycerol, 0.5% BSA and 0.02% sodium azide.

## Product Images

---



Western Blot analysis of CoLo cells using CD205 Polyclonal Antibody.