

SYT10 Antibody



PACO02834

Product Information

Size:

50ug

Reactivity:

Human, Mouse, Rat

Source:

Rabbit

Isotype:

IgG

Applications:

ELISA, WB

Recommended dilutions:

WB:1:500-1:2000

Protein Background:

Gene ID:

SYT10

Uniprot

Q6XYQ8

Synonyms:

SYT10; Synaptotagmin-10; Synaptotagmin X; SytX

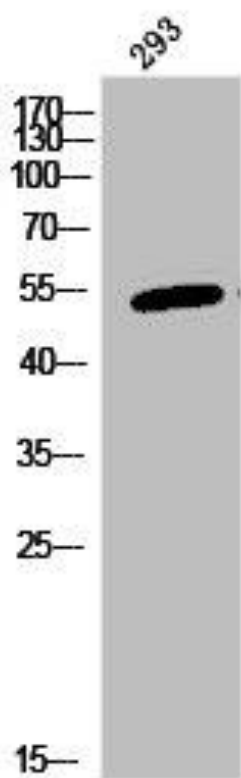
Immunogen:

Synthesized peptide derived from the C-terminal region of human Synaptotagmin X.

Storage:

Liquid in PBS containing 50% glycerol, 0.5% BSA and 0.02% sodium azide.

Product Images



Western Blot analysis of 293 cells using Synaptotagmin X Polyclonal Antibody.