

# Phospho-GRB10 (Y67) Antibody



PACO02791

---

## Product Information

**Size:**

50ug

**Reactivity:**

Human

**Source:**

Rabbit

**Isotype:**

IgG

**Applications:**

ELISA, WB, IHC, IF

**Recommended dilutions:**

WB:1:500-1:2000, IHC:1:100-1:300,  
IF:1:200-1:1000

**Protein Background:****Gene ID:**

GRB10

**Uniprot**

Q13322

**Synonyms:**

GRB10; GRBIR; KIAA0207; Growth factor receptor-bound protein 10; GRB10 adapter protein; Insulin receptor-binding protein Grb-IR

**Immunogen:**

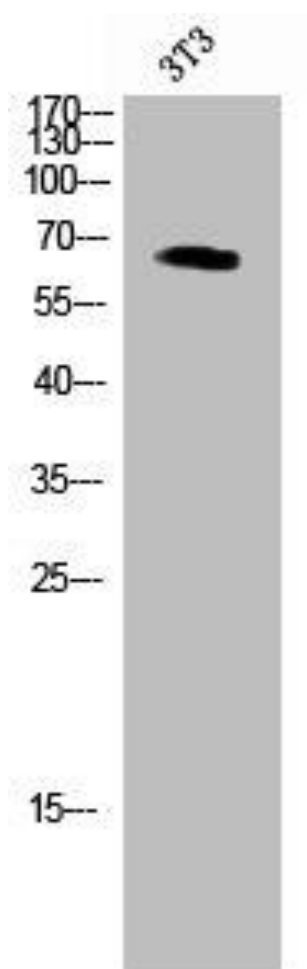
Synthesized peptide derived from human GRB10 around the phosphorylation site of Y67.

**Storage:**

Liquid in PBS containing 50% glycerol, 0.5% BSA and 0.02% sodium azide.

## Product Images

---



Western Blot analysis of COLO cells using Phospho-GRB10 (Y67) Polyclonal Antibody.