

# TRIM59 Antibody



PACO02786

---

## Product Information

**Size:**

50ug

**Reactivity:**

Human, Mouse

**Source:**

Rabbit

**Isotype:**

IgG

**Applications:**

ELISA, WB, IHC, IF

**Recommended dilutions:**

WB:1:500-1:2000, IHC:1:100-1:300,  
IF:1:200-1:1000

**Protein Background:**

**Gene ID:**

TRIM59

**Uniprot**

Q8IWR1

**Synonyms:**

TRIM59; RNF104; TRIM57; TSBF1; Tripartite motif-containing protein 59; RING finger protein 104; Tumor suppressor TSBF-1

**Immunogen:**

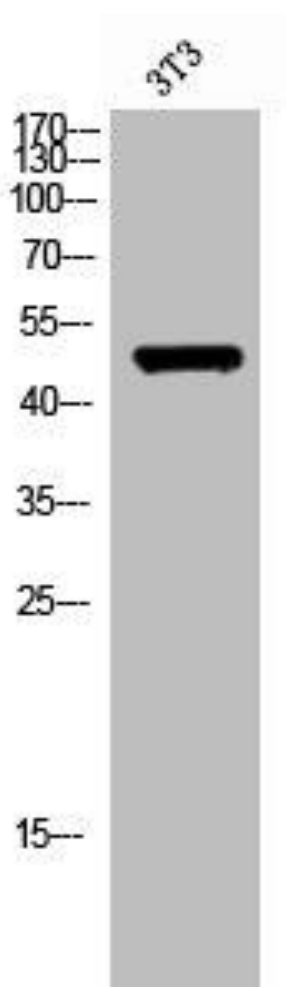
Synthesized peptide derived from the Internal region of human TRIM59.

**Storage:**

Liquid in PBS containing 50% glycerol, 0.5% BSA and 0.02% sodium azide.

## Product Images

---



Western Blot analysis of 3T3 cells using TRIM59 Polyclonal Antibody.