

# OR10H3/OR10H4 Antibody



PACO02779

---

## Product Information

**Size:**

50ug

**Reactivity:**

Human

**Source:**

Rabbit

**Isotype:**

IgG

**Applications:**

ELISA, WB

**Recommended dilutions:**

WB:1:500-1:2000

**Protein Background:****Gene ID:**

OR10H3/OR10H4

**Uniprot**

O60404/Q8NGA5

**Synonyms:**

OR10H3; Olfactory receptor 10H3; Olfactory receptor OR19-24; OR10H4; Olfactory receptor 10H4; Olfactory receptor OR19-28

**Immunogen:**

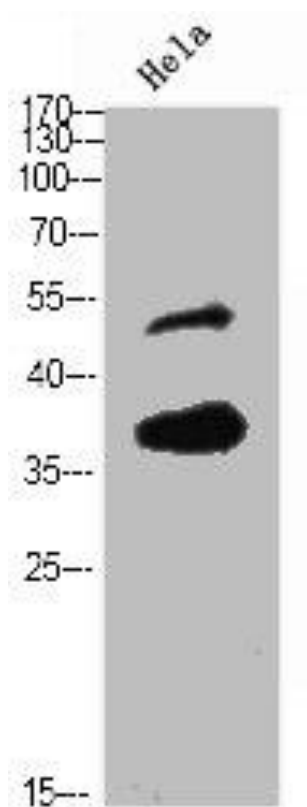
Synthesized peptide derived from the C-terminal region of human Olfactory receptor 10H3/4.

**Storage:**

Liquid in PBS containing 50% glycerol, 0.5% BSA and 0.02% sodium azide.

## Product Images

---



Western Blot analysis of HELA using Olfactory receptor 10H3/4 Polyclonal Antibody.