

STK38L Antibody



PACO02745

Product Information

Size:

50ug

Reactivity:

Human, Mouse, Rat

Source:

Rabbit

Isotype:

IgG

Applications:

ELISA, WB, IHC

Recommended dilutions:

WB:1:500-1:2000, IHC:1:100-1:300,
IHC:1:200-1:1000

Protein Background:

Gene ID:

STK38L

Uniprot

Q9Y2H1

Synonyms:

STK38L; KIAA0965; NDR2; Serine/threonine-protein kinase 38-like; NDR2 protein kinase; Nuclear Dbf2-related kinase 2

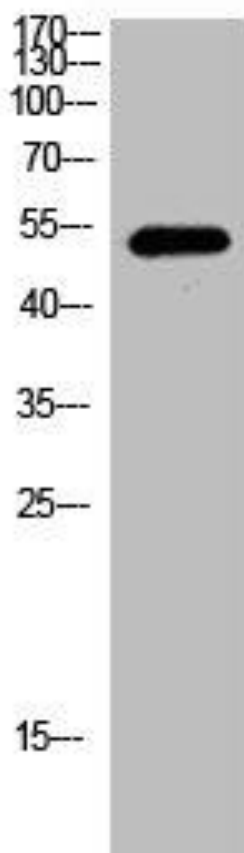
Immunogen:

Synthesized peptide derived from the C-terminal region of human NDR2.

Storage:

Liquid in PBS containing 50% glycerol, 0.5% BSA and 0.02% sodium azide.

Product Images



Western Blot analysis of mouse cells using NDR2 Polyclonal Antibody.