

# TPX2 Antibody



PACO02740

---

## Product Information

**Size:**

50ug

**Reactivity:**

Human, Mouse

**Source:**

Rabbit

**Isotype:**

IgG

**Applications:**

ELISA, WB, IHC

**Recommended dilutions:**

WB:1:500-1:2000, IHC:1:100-1:300

**Protein Background:****Gene ID:**

TPX2

**Uniprot**

Q9ULW0

**Synonyms:**

TPX2; C20orf1; C20orf2; DIL2; HCA519; Targeting protein for Xklp2; Differentially expressed in cancerous and non-cancerous lung cells 2; DIL-2; Hepatocellular carcinoma-associated antigen 519; Protein fls353; Restricted expression prolifera

**Immunogen:**

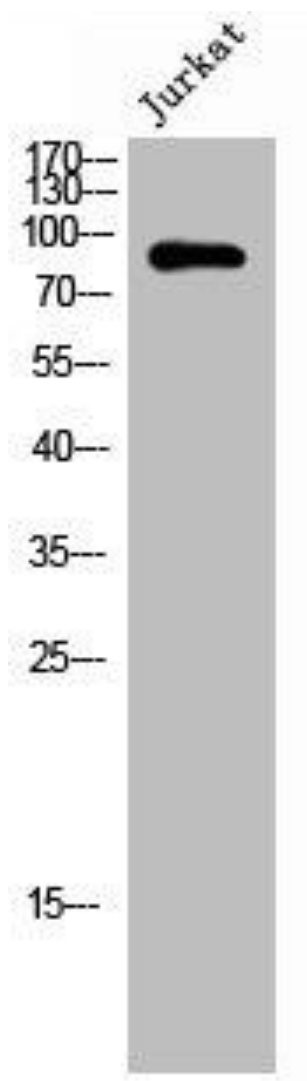
Synthesized peptide derived from the Internal region of human TPX2.

**Storage:**

Liquid in PBS containing 50% glycerol, 0.5% BSA and 0.02% sodium azide.

## Product Images

---



Western Blot analysis of Jurkat cells using TPX2 Polyclonal Antibody.