

# SHANK2 Antibody



PACO02737

---

## Product Information

**Size:**

50ug

**Reactivity:**

Human

**Source:**

Rabbit

**Isotype:**

IgG

**Applications:**

ELISA, WB

**Recommended dilutions:**

WB:1:500-1:2000

**Protein Background:**

**Gene ID:**

SHANK2

**Uniprot**

Q9UPX8

**Synonyms:**

SHANK2; CORTBP1; KIAA1022; SH3 and multiple ankyrin repeat domains protein 2; Shank2; Cortactin-binding protein 1; CortBP1; Proline-rich synapse-associated protein 1

**Immunogen:**

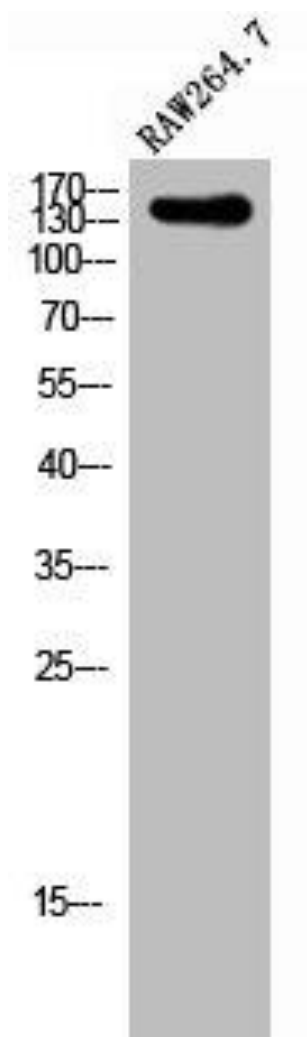
Synthesized peptide derived from the Internal region of human Shank 2.

**Storage:**

Liquid in PBS containing 50% glycerol, 0.5% BSA and 0.02% sodium azide.

## Product Images

---



Western Blot analysis of RAW264.7 cells using Shank 2 Polyclonal Antibody.