

RAB18 Antibody



PACO02735

Product Information

Size:

50ug

Reactivity:

Human, Mouse, Rat

Source:

Rabbit

Isotype:

IgG

Applications:

ELISA, WB

Recommended dilutions:

WB:1:500-1:2000

Protein Background:**Gene ID:**

RAB18

Uniprot

Q9NP72

Synonyms:

RAB18; Ras-related protein Rab-18

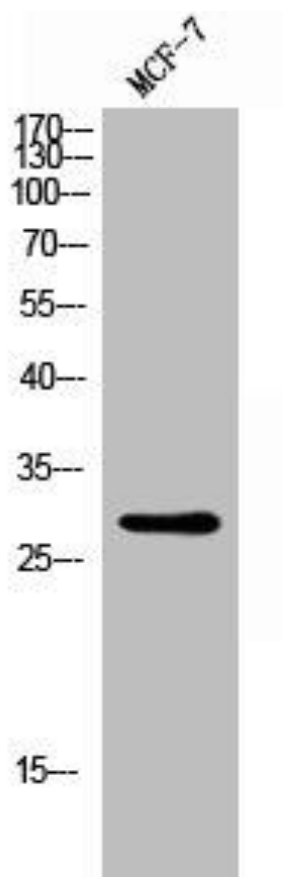
Immunogen:

Synthesized peptide derived from the Internal region of human Rab 18.

Storage:

Liquid in PBS containing 50% glycerol, 0.5% BSA and 0.02% sodium azide.

Product Images



Western Blot analysis of MCF-7 cells using Rab 18 Polyclonal Antibody.