

SCAF8 Antibody



PACO02725

Product Information

Size:

50ug

Reactivity:

Human, Mouse, Rat

Source:

Rabbit

Isotype:

IgG

Applications:

ELISA, WB

Recommended dilutions:

WB:1:500-1:2000

Protein Background:

Gene ID:

SCAF8

Uniprot

Q9UPN6

Synonyms:

SCAF8; CCAP7; KIAA1116; RBM16; Protein SCAF8; CDC5L complex-associated protein 7; RNA-binding motif protein 16; SR-related and CTD-associated factor 8

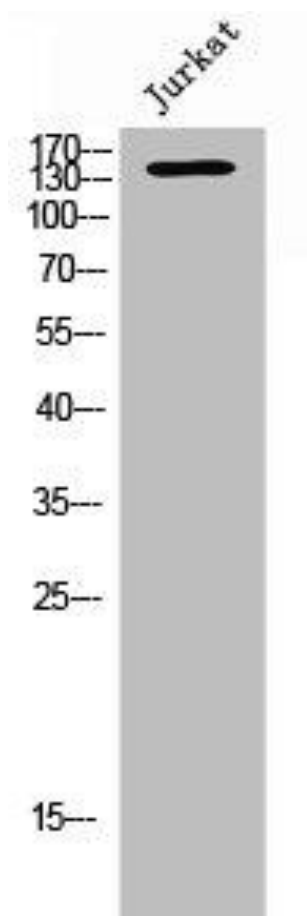
Immunogen:

Synthesized peptide derived from the Internal region of human RBM16.

Storage:

Liquid in PBS containing 50% glycerol, 0.5% BSA and 0.02% sodium azide.

Product Images



Western Blot analysis of JK cells using RBM16 Polyclonal Antibody.