

PACO02720

Product Information

Size:

50ug

Reactivity:

Human, Mouse, Rat

Source:

Rabbit

Isotype:

IgG

Applications:

ELISA, WB

Recommended dilutions:

WB:1:500-1:2000

Protein Background:

Gene ID:

GPC5

Uniprot

P78333

Synonyms:

GPC5; Glypican-5

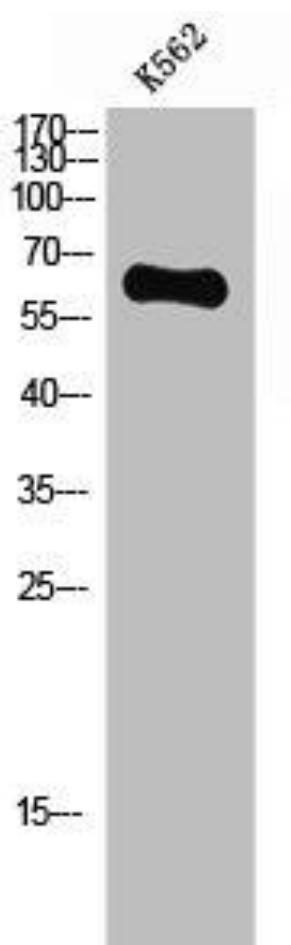
Immunogen:

Synthesized peptide derived from the Internal region of human Glypican-5.

Storage:

Liquid in PBS containing 50% glycerol, 0.5% BSA and 0.02% sodium azide.

Product Images



Western Blot analysis of K562 cells using Glypican-5 Polyclonal Antibody.