

GPR115 Antibody



PACO02708

Product Information

Size:

50ug

Reactivity:

Human, Mouse

Source:

Rabbit

Isotype:

IgG

Applications:

ELISA, WB, IF

Recommended dilutions:

WB:1:500-1:2000, IF:1:200-1:1000

Protein Background:

Gene ID:

ADGRF4

Uniprot

Q8IZF3

Synonyms:

GPR115; PGR18; Probable G-protein coupled receptor 115; G-protein coupled receptor PGR18

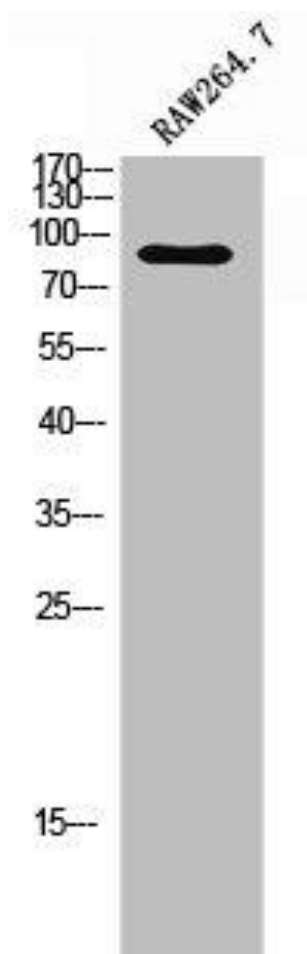
Immunogen:

Synthesized peptide derived from the C-terminal region of human GPR115.

Storage:

Liquid in PBS containing 50% glycerol, 0.5% BSA and 0.02% sodium azide.

Product Images



Western Blot analysis of RAW264.7 cells using GPR115 Polyclonal Antibody.