

# FCGR2B Antibody



PACO02706

---

## Product Information

**Size:**

50ug

**Reactivity:**

Human, Mouse, Rat

**Source:**

Rabbit

**Isotype:**

IgG

**Applications:**

ELISA, WB, IHC

**Recommended dilutions:**

WB:1:500-1:2000, IHC:1:100-1:300

**Protein Background:**

**Gene ID:**

FCGR2B

**Uniprot**

P31994

**Synonyms:**

Low affinity immunoglobulin gamma Fc region receptor II-b

**Immunogen:**

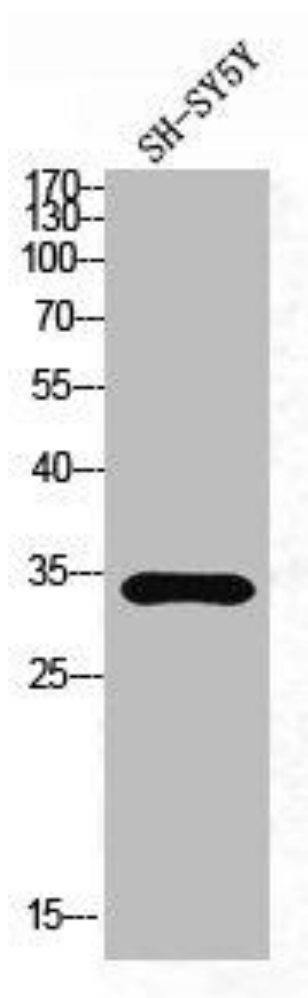
Synthesized peptide derived from human CD32 around the non-phosphorylation site of Y292.

**Storage:**

Liquid in PBS containing 50% glycerol, 0.5% BSA and 0.02% sodium azide.

## Product Images

---



Western Blot analysis of SH-SY5Y cells using CD32 Polyclonal Antibody.