

# OR4C16 Antibody



PACO02690

---

## Product Information

**Size:**

50ug

**Reactivity:**

Human

**Source:**

Rabbit

**Isotype:**

IgG

**Applications:**

ELISA, WB, IF

**Recommended dilutions:**

WB:1:500-1:2000, IF:1:200-1:1000

**Protein Background:**

**Gene ID:**

OR4C16

**Uniprot**

Q8NGL9

**Synonyms:**

OR4C16; Olfactory receptor 4C16; Olfactory receptor OR11-135

**Immunogen:**

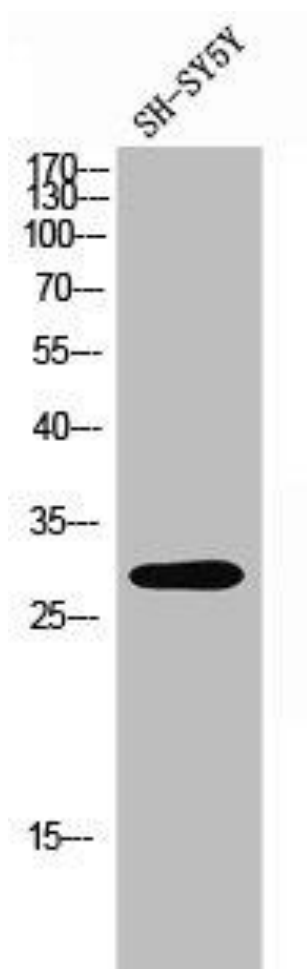
Synthesized peptide derived from the C-terminal region of human Olfactory receptor 4C16.

**Storage:**

Liquid in PBS containing 50% glycerol, 0.5% BSA and 0.02% sodium azide.

## Product Images

---



Western Blot analysis of SH-SY5Y cells using Olfactory receptor 4C16 Polyclonal Antibody.