

# Cleaved-F2R (S42) Antibody



PACO02680

---

## Product Information

**Size:**

50ug

**Reactivity:**

Human

**Source:**

Rabbit

**Isotype:**

IgG

**Applications:**

ELISA, WB

**Recommended dilutions:**

WB:1:500-1:2000

**Protein Background:**

**Gene ID:**

F2R

**Uniprot**

P25116

**Synonyms:**

F2R; CF2R; PAR1; TR; Proteinase-activated receptor 1; PAR-1; Coagulation factor II receptor; Thrombin receptor

**Immunogen:**

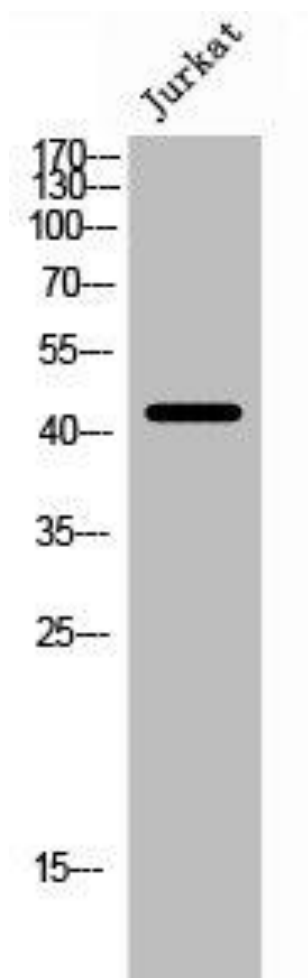
Synthesized peptide derived from the N-terminal region of human Thrombin R.

**Storage:**

Liquid in PBS containing 50% glycerol, 0.5% BSA and 0.02% sodium azide.

## Product Images

---



Western Blot analysis of Jurkat cells using Cleaved-Thrombin R (S42) Polyclonal Antibody.