

# EMR1 Antibody



PACO02645

---

## Product Information

**Size:**

50ug

**Reactivity:**

Human

**Source:**

Rabbit

**Isotype:**

IgG

**Applications:**

ELISA, WB

**Recommended dilutions:**

WB:1:500-1:2000

**Protein Background:****Gene ID:**

ADGRE1

**Uniprot**

Q14246

**Synonyms:**

EMR1; TM7LN3; EGF-like module-containing mucin-like hormone receptor-like 1; EGF-like module receptor 1; EMR1 hormone receptor

**Immunogen:**

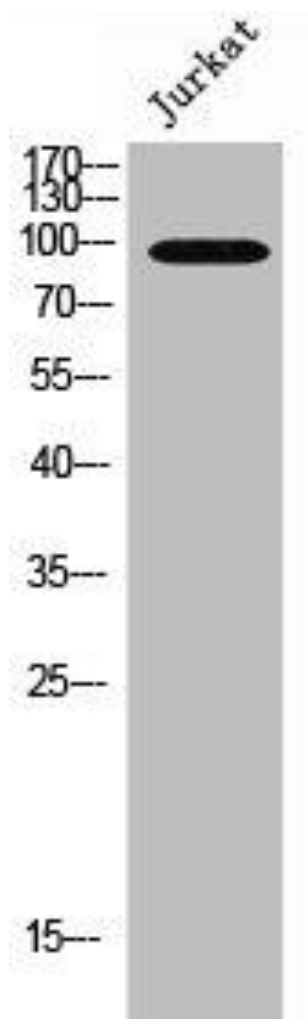
Synthesized peptide derived from the C-terminal region of human EMR1.

**Storage:**

Liquid in PBS containing 50% glycerol, 0.5% BSA and 0.02% sodium azide.

## Product Images

---



Western Blot analysis of Jurkat cells using EMR1 Polyclonal Antibody.