

Phospho-S1PR1 (T236) Antibody



PACO02611

Product Information

Size:

50ug

Reactivity:

Human, Mouse, Rat

Source:

Rabbit

Isotype:

IgG

Applications:

ELISA, WB, IF

Recommended dilutions:

IF:1:200-1:1000

Protein Background:**Gene ID:**

S1PR1

Uniprot

P21453

Synonyms:

S1PR1; CHEDG1; EDG1; Sphingosine 1-phosphate receptor 1; S1P receptor 1; S1P1; Endothelial differentiation G-protein coupled receptor 1; Sphingosine 1-phosphate receptor Edg-1; S1P receptor Edg-1; CD antigen CD363

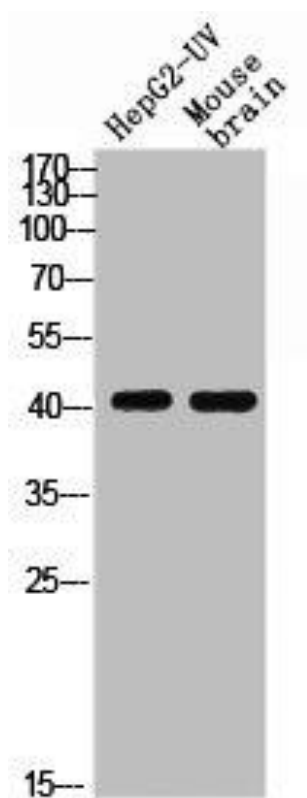
Immunogen:

Synthesized peptide derived from human EDG-1 around the phosphorylation site of T236.

Storage:

Liquid in PBS containing 50% glycerol, 0.5% BSA and 0.02% sodium azide.

Product Images



Western blot analysis of HEPG2-UV MOUSE-BRAIN using p-EDG-1 (T236) antibody.