

SYNE3 Antibody



PACO02559

Product Information

Size:

50ug

Reactivity:

Human, Mouse

Source:

Rabbit

Isotype:

IgG

Applications:

ELISA, WB, IF

Recommended dilutions:

WB:1:500-1:2000, IF:1:200-1:1000

Protein Background:

Gene ID:

SYNE3

Uniprot

Q6ZMZ3

Synonyms:

SYNE3; C14orf49; Nesprin-3; Nuclear envelope spectrin repeat protein 3

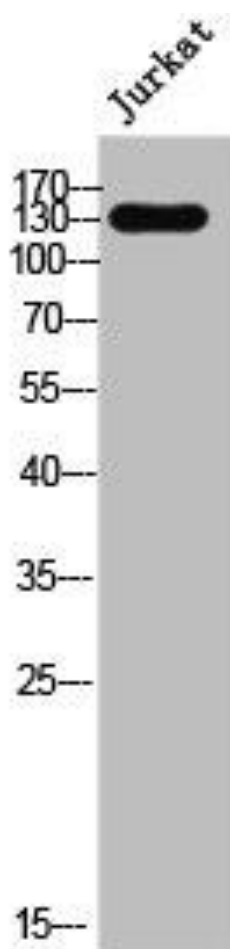
Immunogen:

Synthesized peptide derived from the Internal region of human Nesprin-3.

Storage:

Liquid in PBS containing 50% glycerol, 0.5% BSA and 0.02% sodium azide.

Product Images



Western Blot analysis of Jurkat cells using Nesprin-3 Polyclonal Antibody.