

# OR6P1 Antibody



PACO02472

---

## Product Information

**Size:**

50ug

**Reactivity:**

Human

**Source:**

Rabbit

**Isotype:**

IgG

**Applications:**

ELISA, WB, IF

**Recommended dilutions:**

WB:1:500-1:2000, IF:1:200-1:1000

**Protein Background:**

**Gene ID:**

OR6P1

**Uniprot**

Q8NGX9

**Synonyms:**

OR6P1; Olfactory receptor 6P1; Olfactory receptor OR1-12

**Immunogen:**

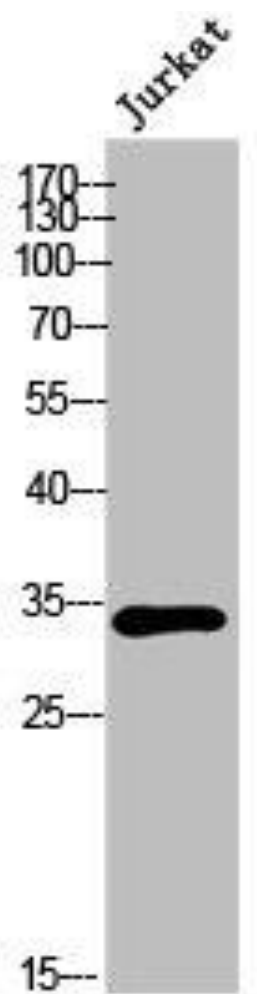
Synthesized peptide derived from the Internal region of human Olfactory receptor 6P1.

**Storage:**

Liquid in PBS containing 50% glycerol, 0.5% BSA and 0.02% sodium azide.

## Product Images

---



Western Blot analysis of Jurkat cells using Olfactory receptor 6P1 Polyclonal Antibody.