

# OR2AJ1 Antibody



PACO02470

---

## Product Information

**Size:**

50ug

**Reactivity:**

Human

**Source:**

Rabbit

**Isotype:**

IgG

**Applications:**

ELISA, WB, IF

**Recommended dilutions:**

WB:1:500-1:2000, IF:1:200-1:1000

**Protein Background:**

**Gene ID:**

OR2AJ1

**Uniprot**

Q8NGZ0

**Synonyms:**

OR2AJ1; OR2AJ1P; Olfactory receptor 2AJ1

**Immunogen:**

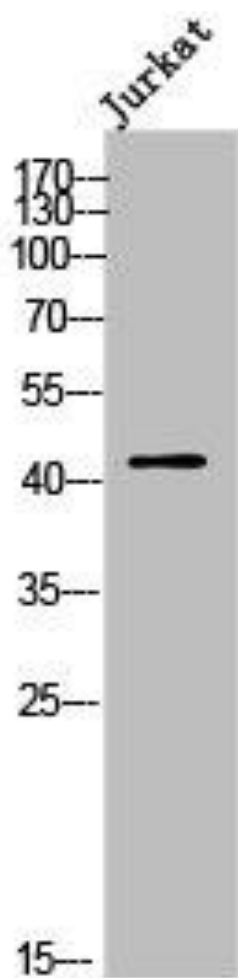
Synthesized peptide derived from the Internal region of human Olfactory receptor 2AJ1.

**Storage:**

Liquid in PBS containing 50% glycerol, 0.5% BSA and 0.02% sodium azide.

## Product Images

---



Western Blot analysis of Jurkat cells using Olfactory receptor 2AJ1 Polyclonal Antibody.