

# CNGA1 Antibody



PACO02465

---

## Product Information

**Size:**

50ug

**Reactivity:**

Human, Mouse, Rat

**Source:**

Rabbit

**Isotype:**

IgG

**Applications:**

ELISA, WB

**Recommended dilutions:**

WB:1:500-1:2000

**Protein Background:****Gene ID:**

CNGA1

**Uniprot**

P29973

**Synonyms:**

CNGA1; CNCG; CNCG1; cGMP-gated cation channel alpha-1; Cyclic nucleotide-gated cation channel 1; Cyclic nucleotide-gated channel alpha-1; CNG channel alpha-1; CNG-1; CNG1; Cyclic nucleotide-gated channel; photoreceptor; Rod photoreceptor cG

**Immunogen:**

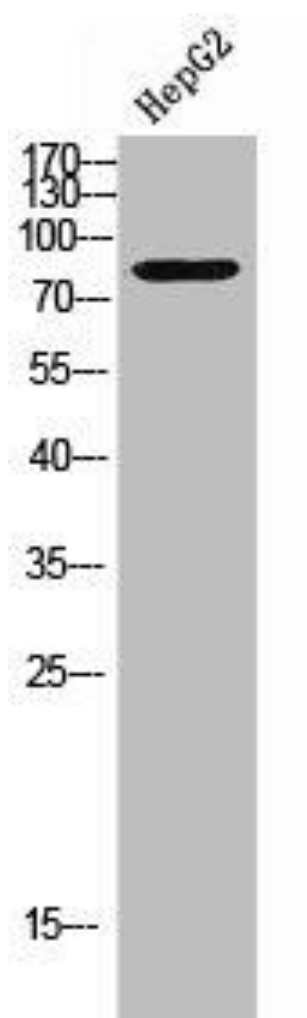
Synthesized peptide derived from the Internal region of human CNG-1.

**Storage:**

Liquid in PBS containing 50% glycerol, 0.5% BSA and 0.02% sodium azide.

## Product Images

---



Western Blot analysis of HepG2 cells using CNG-1 Polyclonal Antibody.