

OR10A7 Antibody



PACO02451

Product Information

Size:

50ug

Reactivity:

Human

Source:

Rabbit

Isotype:

IgG

Applications:

ELISA, WB

Recommended dilutions:

WB:1:500-1:2000

Protein Background:

Gene ID:

OR10A7

Uniprot

Q8NGE5

Synonyms:

OR10A7; Olfactory receptor 10A7; Olfactory receptor OR12-6

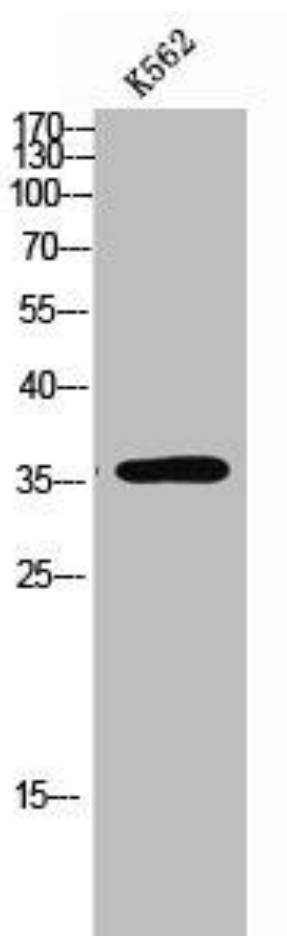
Immunogen:

Synthesized peptide derived from the C-terminal region of human Olfactory receptor 10A7.

Storage:

Liquid in PBS containing 50% glycerol, 0.5% BSA and 0.02% sodium azide.

Product Images



Western Blot analysis of K562 cells using Olfactory receptor 10A7 Polyclonal Antibody.