

OR2D3 Antibody



PACO02446

Product Information

Size:

50ug

Reactivity:

Human

Source:

Rabbit

Isotype:

IgG

Applications:

ELISA, WB, IF

Recommended dilutions:

WB:1:500-1:2000, IF:1:200-1:1000

Protein Background:

Gene ID:

OR2D3

Uniprot

Q8NGH3

Synonyms:

OR2D3; Olfactory receptor 2D3; Olfactory receptor OR11-89

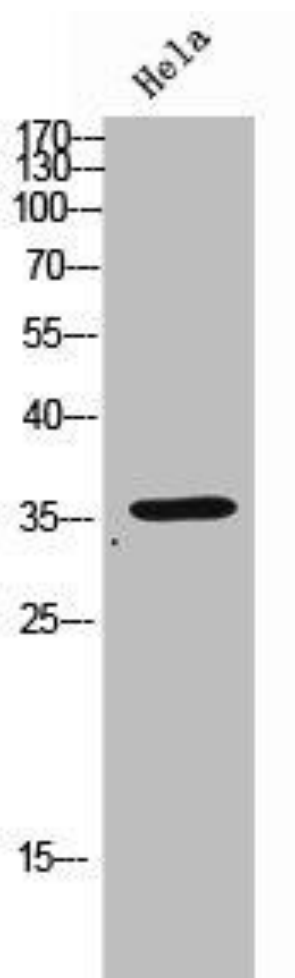
Immunogen:

Synthesized peptide derived from the C-terminal region of human Olfactory receptor 2D3.

Storage:

Liquid in PBS containing 50% glycerol, 0.5% BSA and 0.02% sodium azide.

Product Images



Western Blot analysis of HeLa cells using Olfactory receptor 2D3 Polyclonal Antibody.