

OR52E2 Antibody



PACO02439

Product Information

Size:

50ug

Reactivity:

Human

Source:

Rabbit

Isotype:

IgG

Applications:

ELISA, WB, IF

Recommended dilutions:

WB:1:500-1:2000, IF:1:200-1:1000

Protein Background:

Gene ID:

OR52E2

Uniprot

Q8NGJ4

Synonyms:

OR52E2; Olfactory receptor 52E2

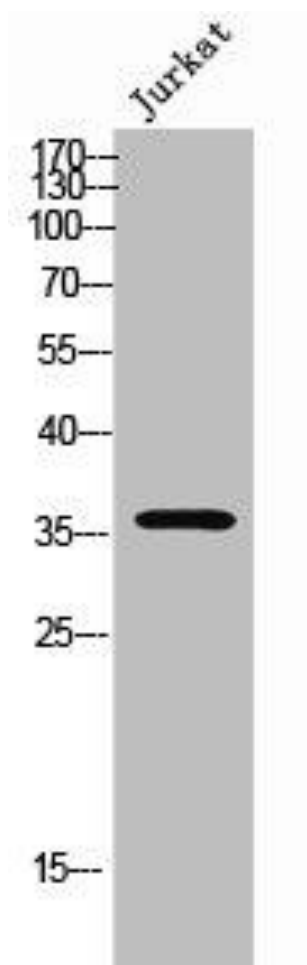
Immunogen:

Synthesized peptide derived from the C-terminal region of human Olfactory receptor 52E2.

Storage:

Liquid in PBS containing 50% glycerol, 0.5% BSA and 0.02% sodium azide.

Product Images



Western Blot analysis of Jurkat cells using Olfactory receptor 52E2 Polyclonal Antibody.