

MRGPRX4 Antibody



PACO02437

Product Information

Size:

50ug

Reactivity:

Human

Source:

Rabbit

Isotype:

IgG

Applications:

ELISA, WB, IF

Recommended dilutions:

WB:1:500-1:2000, IF:1:200-1:1000

Protein Background:

Gene ID:

MRGPRX4

Uniprot

Q96LA9

Synonyms:

MRGPRX4; MRGX4; SNSR5; SNSR6; Mas-related G-protein coupled receptor member X4; Sensory neuron-specific G-protein coupled receptor 5/6

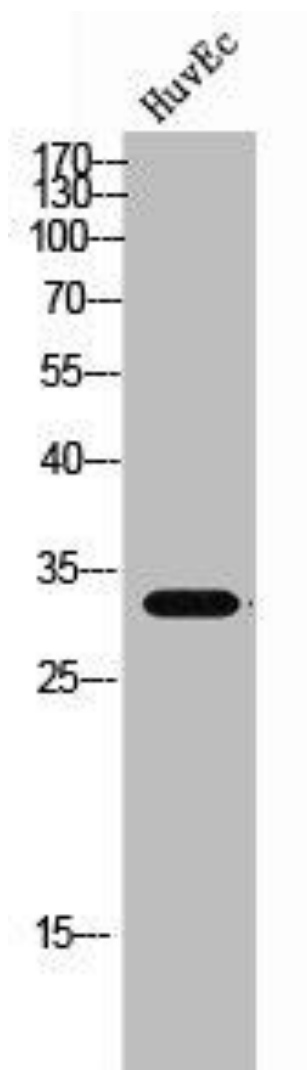
Immunogen:

Synthesized peptide derived from the C-terminal region of human MRGX4.

Storage:

Liquid in PBS containing 50% glycerol, 0.5% BSA and 0.02% sodium azide.

Product Images



Western Blot analysis of HUVEC cells using MRGX4 Polyclonal Antibody.