

RHPN1 Antibody



PACO02428

Product Information

Size:

50ug

Reactivity:

Human

Source:

Rabbit

Isotype:

IgG

Applications:

ELISA, WB

Recommended dilutions:

WB:1:500-1:2000

Protein Background:

Gene ID:

RHPN1

Uniprot

Q8TCX5

Synonyms:

RHPN1; KIAA1929; Rhophilin-1; GTP-Rho-binding protein 1

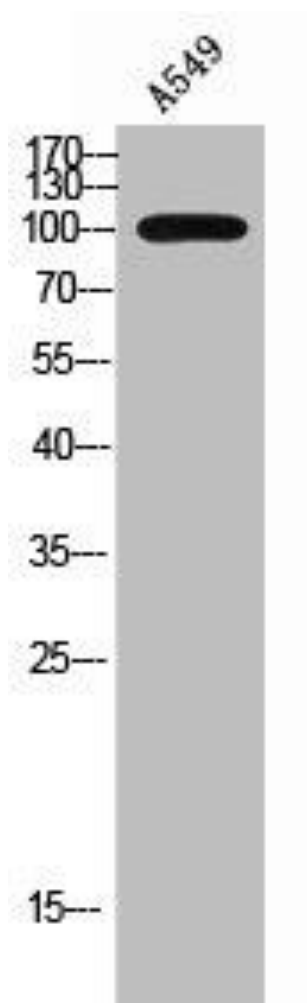
Immunogen:

Synthesized peptide derived from the Internal region of human Rhophilin.

Storage:

Liquid in PBS containing 50% glycerol, 0.5% BSA and 0.02% sodium azide.

Product Images



Western Blot analysis of A549 cells using Rhophilin Polyclonal Antibody.