

CHRM5 Antibody



PACO02421

Product Information

Size:

50ug

Reactivity:

Human

Source:

Rabbit

Isotype:

IgG

Applications:

ELISA, WB, IF

Recommended dilutions:

WB:1:500-1:2000, IF:1:200-1:1000

Protein Background:

Gene ID:

CHRM5

Uniprot

P08912

Synonyms:

CHRM5; Muscarinic acetylcholine receptor M5

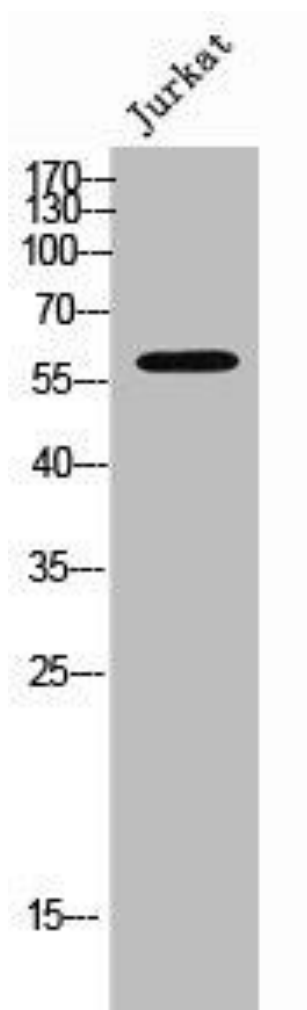
Immunogen:

Synthesized peptide derived from the Internal region of human mAChR M5.

Storage:

Liquid in PBS containing 50% glycerol, 0.5% BSA and 0.02% sodium azide.

Product Images



Western Blot analysis of Jurkat cells using mAChR M5 Polyclonal Antibody.