

MED8 Antibody



PACO02420

Product Information

Size:

50ug

Reactivity:

Human, Mouse, Rat

Source:

Rabbit

Isotype:

IgG

Applications:

ELISA, WB

Recommended dilutions:

WB:1:500-1:2000

Protein Background:**Gene ID:**

MED8

Uniprot

Q96G25

Synonyms:

MED8; Mediator of RNA polymerase II transcription subunit 8; Activator-recruited cofactor 32 kDa component; ARC32; Mediator complex subunit 8

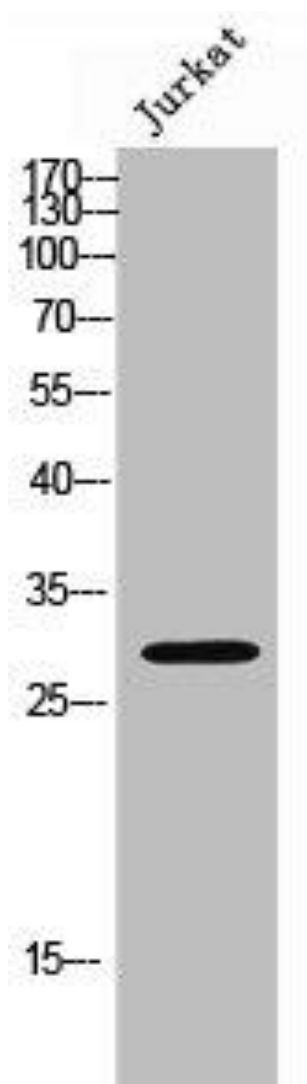
Immunogen:

Synthesized peptide derived from the Internal region of human Med8.

Storage:

Liquid in PBS containing 50% glycerol, 0.5% BSA and 0.02% sodium azide.

Product Images



Western Blot analysis of JK cells using Med8 Polyclonal Antibody.