

DUSP10 Antibody



PACO02410

Product Information

Size:

50ug

Reactivity:

Human, Mouse, Rat

Source:

Rabbit

Isotype:

IgG

Applications:

ELISA, WB

Recommended dilutions:

WB:1:500-1:2000

Protein Background:**Gene ID:**

DUSP10

Uniprot

Q9Y6W6

Synonyms:

DUSP10; MKP5; Dual specificity protein phosphatase 10; Mitogen-activated protein kinase phosphatase 5; MAP kinase phosphatase 5; MKP-5

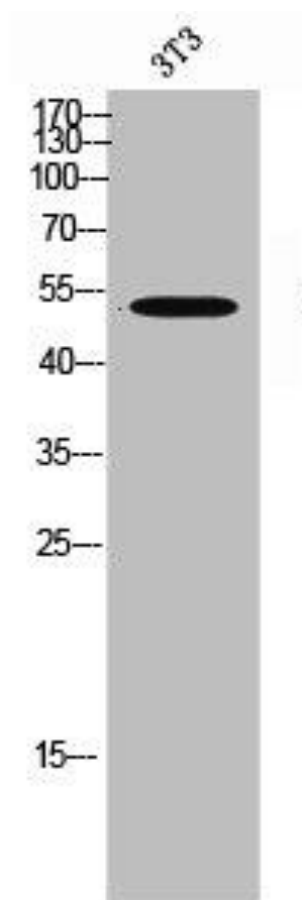
Immunogen:

Synthesized peptide derived from the C-terminal region of human MKP-5.

Storage:

Liquid in PBS containing 50% glycerol, 0.5% BSA and 0.02% sodium azide.

Product Images



Western Blot analysis of 3T3 cells using MKP-5 Polyclonal Antibody.