

Phospho-CDC37 (S13) Antibody



PACO02399

Product Information

Size:

50ug

Reactivity:

Human, Mouse, Rat

Source:

Rabbit

Isotype:

IgG

Applications:

ELISA, WB, IHC

Recommended dilutions:

WB:1:500-1:2000, IHC:1:100-1:300

Protein Background:**Gene ID:**

CDC37

Uniprot

Q16543

Synonyms:

CDC37; CDC37A; Hsp90 co-chaperone Cdc37; Hsp90 chaperone protein kinase-targeting subunit; p50Cdc37

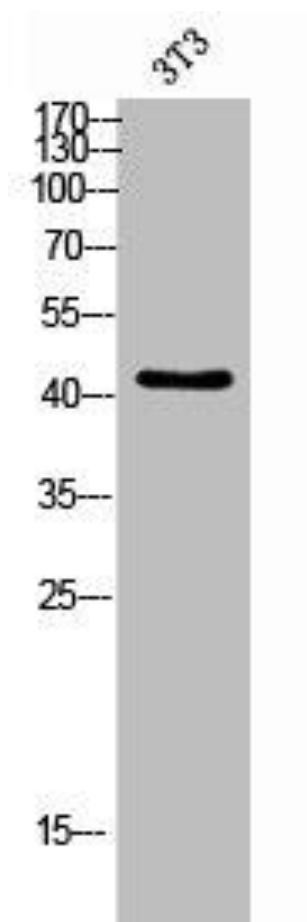
Immunogen:

Synthesized peptide derived from human Cdc37 around the phosphorylation site of S13.

Storage:

Liquid in PBS containing 50% glycerol, 0.5% BSA and 0.02% sodium azide.

Product Images



Western Blot analysis of 3T3 cells using Phospho-Cdc37 (S13) Polyclonal Antibody.