

RAB31 Antibody



PACO02387

Product Information

Size:

50ug

Reactivity:

Human, Mouse, Rat

Source:

Rabbit

Isotype:

IgG

Applications:

ELISA, WB

Recommended dilutions:

WB:1:500-1:2000

Protein Background:

Gene ID:

RAB31

Uniprot

Q13636

Synonyms:

RAB31; RAB22B; Ras-related protein Rab-31; Ras-related protein Rab-22B

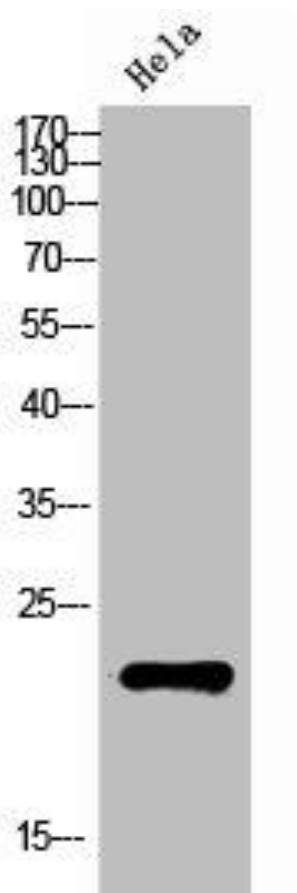
Immunogen:

Synthesized peptide derived from the Internal region of human Rab 31.

Storage:

Liquid in PBS containing 50% glycerol, 0.5% BSA and 0.02% sodium azide.

Product Images



Western Blot analysis of HeLa cells using Rab 31 Polyclonal Antibody.