

# MRPS30 Antibody



PACO02376

---

## Product Information

**Size:**

50ug

**Reactivity:**

Human

**Source:**

Rabbit

**Isotype:**

IgG

**Applications:**

ELISA, WB

**Recommended dilutions:**

WB:1:500-1:2000

**Protein Background:**

**Gene ID:**

MRPS30

**Uniprot**

Q9NP92

**Synonyms:**

MRPS30; PDCD9; BM-047; 28S ribosomal protein S30; mitochondrial; MRP-S30; S30mt; Programmed cell death protein 9

**Immunogen:**

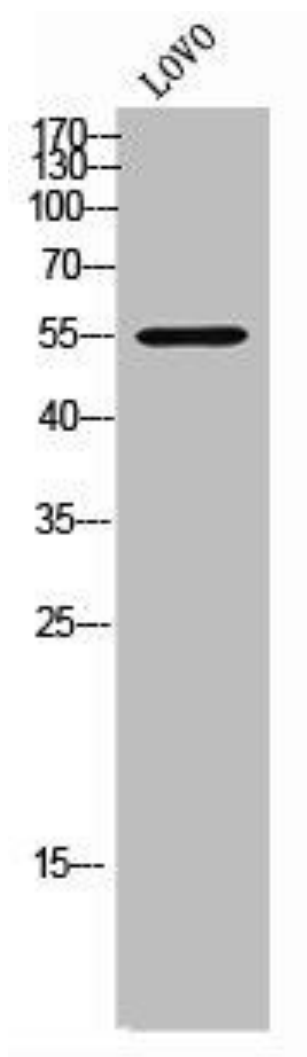
Synthesized peptide derived from the C-terminal region of human MRP-S30.

**Storage:**

Liquid in PBS containing 50% glycerol, 0.5% BSA and 0.02% sodium azide.

## Product Images

---



Western Blot analysis of LOVO cells using MRP-S30 Polyclonal Antibody.