

CD3EAP Antibody



PACO02373

Product Information

Size:

50ug

Reactivity:

Human

Source:

Rabbit

Isotype:

IgG

Applications:

ELISA, WB, IHC

Recommended dilutions:

WB:1:500-1:2000, IHC:1:100-1:300

Protein Background:

Gene ID:

CD3EAP

Uniprot

O15446

Synonyms:

CD3EAP; ASE1; CAST; PAF49; DNA-directed RNA polymerase I subunit RPA34; A34.5; Antisense to ERCC-1 protein; ASE-1; CD3-epsilon-associated protein; CAST; CD3E-associated protein; RNA polymerase I-associated factor PAF49

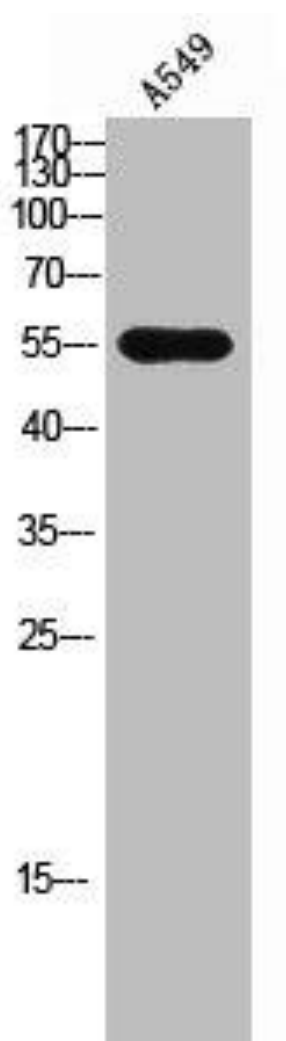
Immunogen:

Synthesized peptide derived from the C-terminal region of human CD3EAP.

Storage:

Liquid in PBS containing 50% glycerol, 0.5% BSA and 0.02% sodium azide.

Product Images



Western Blot analysis of A549 cells using CD3EAP Polyclonal Antibody.