

CGREF1 Antibody



PACO02353

Product Information

Size:

50ug

Reactivity:

Human

Source:

Rabbit

Isotype:

IgG

Applications:

ELISA, WB, IHC

Recommended dilutions:

WB:1:500-1:2000, IHC:1:100-1:300

Protein Background:

Gene ID:

CGREF1

Uniprot

Q99674

Synonyms:

CGREF1; CGR11; Cell growth regulator with EF hand domain protein 1; Cell growth regulatory gene 11 protein; Hydrophobestin

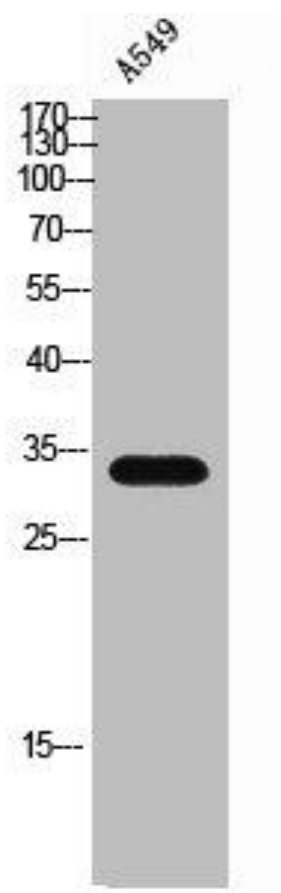
Immunogen:

Synthesized peptide derived from the C-terminal region of human CGREF1.

Storage:

Liquid in PBS containing 50% glycerol, 0.5% BSA and 0.02% sodium azide.

Product Images



Western Blot analysis of A549 cells using CGREF1 Polyclonal Antibody.