

Phospho-CD226 (S329) Antibody



PACO02352

Product Information

Size:

50ug

Reactivity:

Human, Mouse, Monkey

Source:

Rabbit

Isotype:

IgG

Applications:

ELISA, WB, IHC, IF

Recommended dilutions:

WB:1:500-1:2000, IHC:1:100-1:300,
IF:1:200-1:1000

Protein Background:**Gene ID:**

CD226

Uniprot

Q15762

Synonyms:

CD226; DNAM1; CD226 antigen; DNAX accessory molecule 1; DNAM-1; CD antigen
CD226

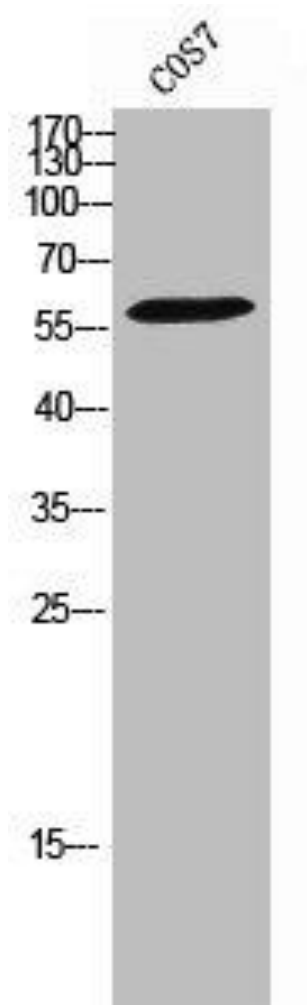
Immunogen:

Synthesized peptide derived from human DNAM-1 around the phosphorylation site of
S329.

Storage:

Liquid in PBS containing 50% glycerol, 0.5% BSA and 0.02% sodium azide.

Product Images



Western Blot analysis of COS7 cells using Phospho-DNAM-1 (S329) Polyclonal Antibody.