

# RASL10A Antibody



PACO02348

---

## Product Information

**Size:**

50ug

**Reactivity:**

Human, Mouse

**Source:**

Rabbit

**Isotype:**

IgG

**Applications:**

ELISA, WB

**Recommended dilutions:**

WB:1:500-1:2000

**Protein Background:**

**Gene ID:**

RASL10A

**Uniprot**

Q92737

**Synonyms:**

RASL10A; RRP22; Ras-like protein family member 10A; Ras-like protein RRP22; Ras-related protein on chromosome 22

**Immunogen:**

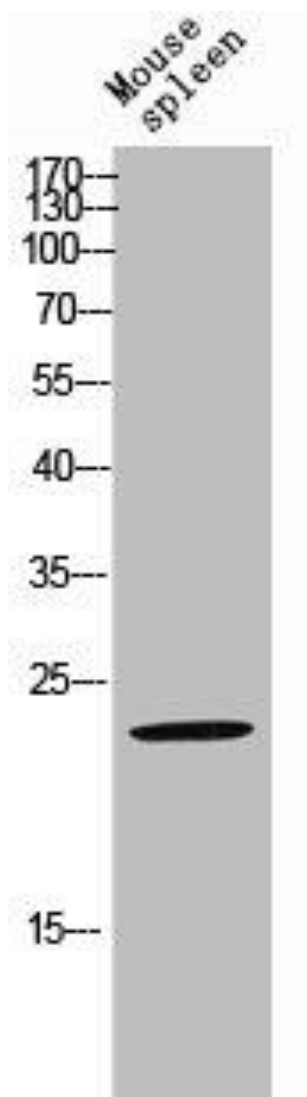
Synthesized peptide derived from the Internal region of human RRP22.

**Storage:**

Liquid in PBS containing 50% glycerol, 0.5% BSA and 0.02% sodium azide.

## Product Images

---



Western Blot analysis of MOUSE-SPLEEN cells using RRP22 Polyclonal Antibody.