

# Phospho-PDLIM5 (Y251) Antibody



PACO02343

---

## Product Information

**Size:**

50ug

**Reactivity:**

Human

**Source:**

Rabbit

**Isotype:**

IgG

**Applications:**

ELISA, WB

**Recommended dilutions:**

WB:1:500-1:2000

**Protein Background:**

**Gene ID:**

PDLIM5

**Uniprot**

Q96HC4

**Synonyms:**

PDLIM5; ENH; L9; PDZ and LIM domain protein 5; Enigma homolog; Enigma-like PDZ and LIM domains protein

**Immunogen:**

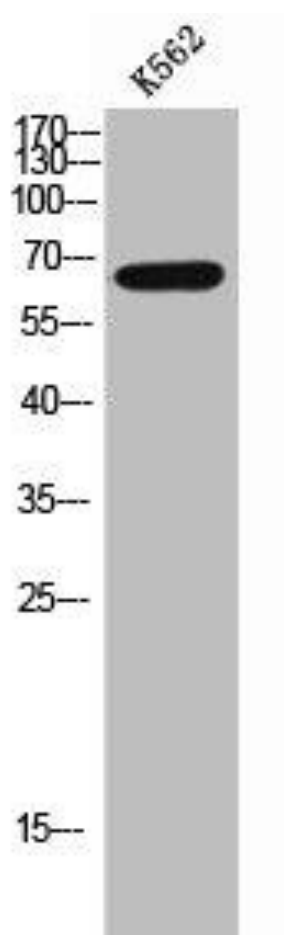
Synthesized peptide derived from human PDLIM5 around the phosphorylation site of Y251.

**Storage:**

Liquid in PBS containing 50% glycerol, 0.5% BSA and 0.02% sodium azide.

## Product Images

---



Western Blot analysis of K562 cells using Phospho-PDLIM5 (Y251) Polyclonal Antibody.