

# SH2B2 Antibody



PACO02342

---

## Product Information

**Size:**

50ug

**Reactivity:**

Human, Mouse, Rat

**Source:**

Rabbit

**Isotype:**

IgG

**Applications:**

ELISA, WB

**Recommended dilutions:**

WB:1:500-1:2000

**Protein Background:****Gene ID:**

SH2B2

**Uniprot**

O14492

**Synonyms:**

SH2B2; APS; SH2B adapter protein 2; Adapter protein with pleckstrin homology and Src homology 2 domains; SH2 and PH domain-containing adapter protein APS

**Immunogen:**

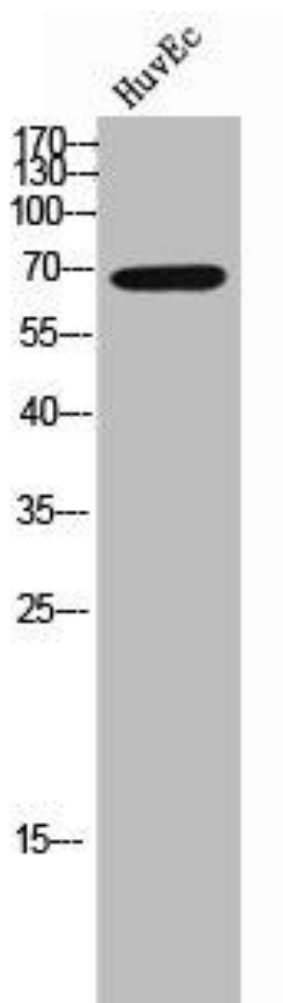
Synthesized peptide derived from the Internal region of human APS.

**Storage:**

Liquid in PBS containing 50% glycerol, 0.5% BSA and 0.02% sodium azide.

## Product Images

---



Western Blot analysis of HuvEc cells using APS Polyclonal Antibody.