

CEBPA Antibody



PACO02328

Product Information

Size:

50ug

Reactivity:

Human, Mouse, Rat

Source:

Rabbit

Isotype:

IgG

Applications:

ELISA, WB, IHC

Recommended dilutions:

WB:1:500-1:2000, IHC:1:100-1:300

Protein Background:**Gene ID:**

CEBPA

Uniprot

P49715

Synonyms:

CEBPA; CCAAT/enhancer-binding protein alpha; C/EBP alpha

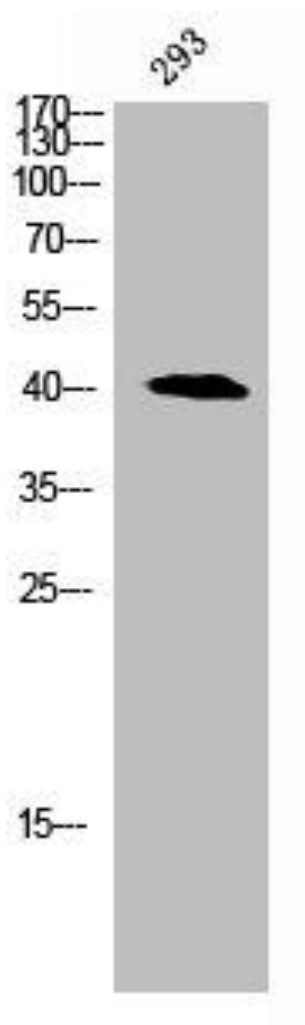
Immunogen:

Synthesized peptide derived from human C/EBP alpha around the non-phosphorylation site of S21.

Storage:

Liquid in PBS containing 50% glycerol, 0.5% BSA and 0.02% sodium azide.

Product Images



Western Blot analysis of 293 cells using C/EBP alpha Polyclonal Antibody.