

SLC30A9 Antibody



PACO02321

Product Information

Size:

50ug

Reactivity:

Human, Mouse, Rat

Source:

Rabbit

Isotype:

IgG

Applications:

ELISA, WB

Recommended dilutions:

WB:1:500-1:2000

Protein Background:**Gene ID:**

SLC30A9

Uniprot

Q6PML9

Synonyms:

SLC30A9; C4orf1; HUEL; Zinc transporter 9; ZnT-9; Human embryonic lung protein; HuEL; Solute carrier family 30 member 9

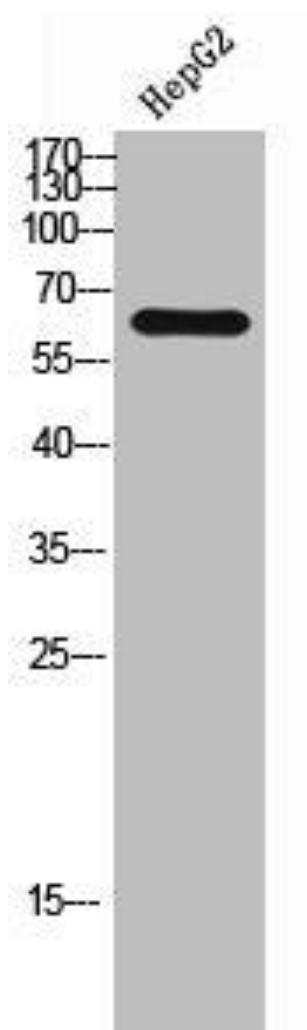
Immunogen:

Synthesized peptide derived from the Internal region of human ZnT-9.

Storage:

Liquid in PBS containing 50% glycerol, 0.5% BSA and 0.02% sodium azide.

Product Images



Western Blot analysis of HepG2 cells using ZnT-9 Polyclonal Antibody.