

CDC42EP2 Antibody



PACO02315

Product Information

Size:

50ug

Reactivity:

Human, Mouse, Rat

Source:

Rabbit

Isotype:

IgG

Applications:

ELISA, WB, IHC

Recommended dilutions:

WB:1:500-1:2000, IHC:1:100-1:300

Protein Background:**Gene ID:**

CDC42EP2

Uniprot

O14613

Synonyms:

CDC42EP2; BORG1; CEP2; Cdc42 effector protein 2; Binder of Rho GTPases 1

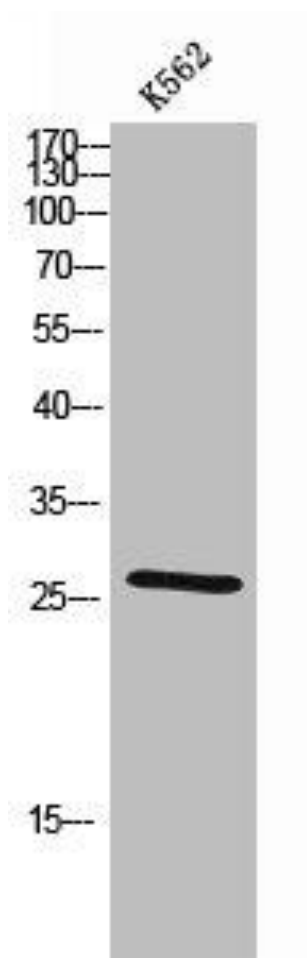
Immunogen:

Synthesized peptide derived from the N-terminal region of human Cdc42EP2.

Storage:

Liquid in PBS containing 50% glycerol, 0.5% BSA and 0.02% sodium azide.

Product Images



Western Blot analysis of K562 cells using Cdc42EP2 Polyclonal Antibody.