

# KIF20A Antibody



PACO02296

---

## Product Information

**Size:**

50ug

**Reactivity:**

Human

**Source:**

Rabbit

**Isotype:**

IgG

**Applications:**

ELISA, WB, IHC, IF

**Recommended dilutions:**

WB:1:500-1:2000, IHC:1:100-1:300,  
IF:1:200-1:1000

**Protein Background:**

**Gene ID:**

KIF20A

**Uniprot**

O95235

**Synonyms:**

KIF20A; MKLP2; RAB6KIFL; Kinesin-like protein KIF20A; GG10\_2; Mitotic kinesin-like protein 2; MKlp2; Rab6-interacting kinesin-like protein; Rabkinesin-6

**Immunogen:**

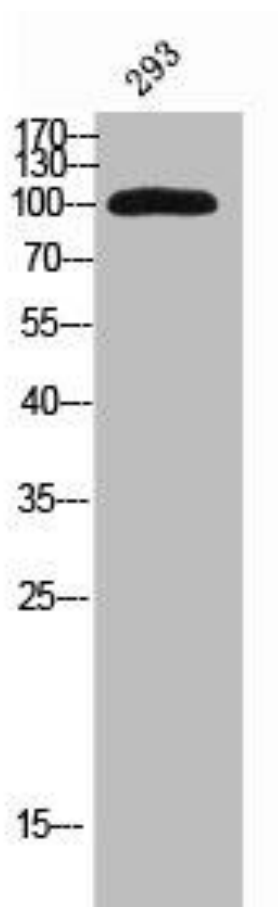
Synthesized peptide derived from human KIF20A around the non-phosphorylation site of S528.

**Storage:**

Liquid in PBS containing 50% glycerol, 0.5% BSA and 0.02% sodium azide.

## Product Images

---



Western Blot analysis of 293 cells using KIF20A Polyclonal Antibody.